



*Power of
Our Community*

2020 MONTGOMERY COUNTY
IMPACT REPORT



The Greater Washington Community Foundation

exists to Build Thriving Communities by guiding strategic philanthropy, providing leadership on critical issues, promoting civic engagement, and inspiring local giving.

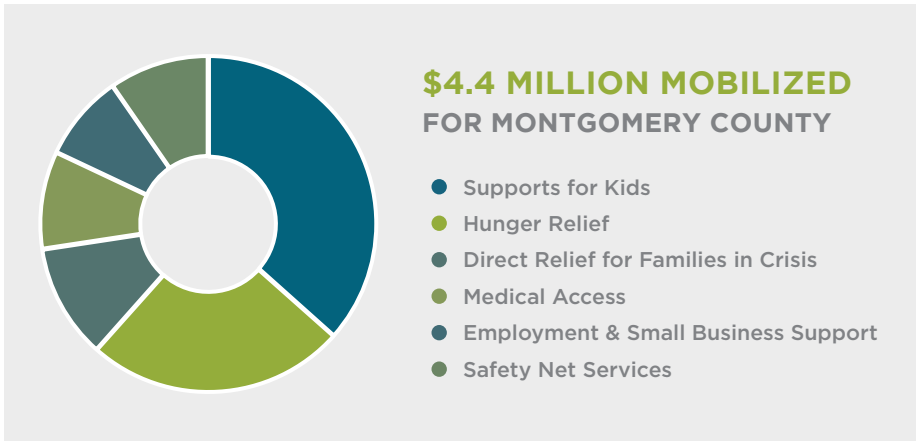
In Montgomery County, we are honored to work with hundreds of people and businesses to facilitate their annual and legacy giving to the causes they care about here in the county, across our region, and around the world. We are grateful to our whole community of givers who share our vision of building more equitable, just, and enriching communities where all residents can live, work, and thrive.

We are proud that so many people also choose to partner through our community impact funds which are working here in Montgomery County to:

- Expand hunger-relief efforts to safely address the rising food insecurity across our community;
- Provide emergency support for those struggling to keep a roof over their heads;
- Help kids participate in remote learning and get the support they need to persist in and out of school;
- Boost our vital health, safety-net, education, and workforce development nonprofits to meet the needs today and build a path out of the COVID-19 crisis.

Drawing on knowledge from donors and key partners, our grant committees evaluate each organization for sound financial management, strong leadership, and effective programs which make a meaningful impact on our community. The result is the enclosed portfolio of grantees which represent some of the best community-based nonprofits serving Montgomery County.

At the time of print, our community impact initiatives had raised and deployed more than \$4.4 million to help stabilize our nonprofit partners and expand critical services in response to the pandemic. (That is more than 4 times what we granted last year!)



We are grateful for the generous donors and partners behind those gifts and our amazing nonprofits who put those dollars to work throughout our community.



Through our community leadership and impact funds, we address critical challenges facing our communities and invest in nonprofits making a real difference.

The **Food for Montgomery Fund** is a public-private partnership created to address the alarming spike in food insecurity caused by the COVID-19 pandemic. This effort galvanizes local businesses, nonprofits, faith communities, and county leaders to implement a coordinated response. Together, the Food for Montgomery partners are working to address the immediate need for food across our community, help sustain our small businesses and farms, and build a stronger food system to efficiently and safely see us through this crisis.

The **Neighbors in Need Montgomery Fund** was originally created to respond to the 2008 economic crisis and its deep impact on Montgomery County residents. More recently, the Fund also invested in strategic solutions that would improve our safety-net system and help neighbors build pathways out of poverty. This year, thanks to generous support from many past Montgomery County Philanthropists of the Year honorees and their families, the Fund launched a special challenge match to provide emergency support to help people keep a roof over their heads and meet their basic needs.

The **Children's Opportunity Fund** is working to improve the lives of low-income children and families in the county. Focusing on innovative, evidence-informed efforts working to close the opportunity gap, the Children's Opportunity Fund identifies priority areas for investment based on unmet need, aligns resources toward serving the county's most vulnerable youth and their families, and seeks new funding sources. This year, the Fund is galvanizing support to help children struggling with remote learning during the pandemic.

The **Sharing Montgomery Fund** is our original impact effort focused on discovering, supporting, and enhancing the work of high-impact nonprofits providing safety-net, education, and workforce development programs to our low-income neighbors. We are proud that our investments over the years enabled the county's nonprofit sector to step up in this time of crisis.

The **COVID-19 Emergency Response Fund** launched in March 2020 to address the urgent health and economic needs of communities disproportionately impacted by the pandemic. By engaging key stakeholders and partners, the Fund has quickly and strategically made grants across our region, helping to stabilize our nonprofits partners and expand critical services.

Hunger Relief

Community Health and Empowerment through Education and Research (CHEER) (communitycheer.org) partners with local health clinics, hospitals, and food providers to address the needs of low-income neighbors who are at-risk or suffering from diabetes, hypertension, and other health challenges. CHEER's staff and volunteers provide weekly food distributions and knowledgeable Community Health Workers to coach individuals on targeted interventions that can improve their health. CHEER assists residents with healthcare enrollment, operates a free summer enrichment program for low-income students, and facilitates community organizing events to help neighbors develop a common vision around how to make the whole community thrive.

Crossroads Community Food Network (crossroadscommunityfoodnetwork.org) aims to build the local food system, educate and empower community members—especially low-income and immigrant residents—about healthy food choices and create universal access to healthy food. Crossroads serves over 3,000 people annually in the Takoma/Langley Crossroads area. Program areas include microenterprise development, healthy eating education, and farmers' market nutrition incentives at the popular Crossroads Farmers Market.

Gaithersburg HELP, Inc. (gaithersburghelp.org) is a volunteer-run organization that provides basic needs assistance to people and families in the Gaithersburg area. Its support services include food, diapers, and prescription funding for anyone in need plus transportation assistance for seniors and adults with disabilities.

Manna Food Center (mannafood.org) works to end hunger through healthy food distribution, nutrition education, and advocacy to reduce poverty across Montgomery County. In 2019, Manna assisted over 34,000 individuals, including children, seniors, veterans and the working poor. In response to COVID-19, Manna has rapidly expanded their reach to meet skyrocketing food security needs in the county. As part of their response supported by The Community Foundation, their Smart Sacks program increased its weekly distribution of bags of food to students from 3,077 to 7,000. In another critical response effort, Manna launched home deliveries to meet the food needs of seniors and the medically vulnerable.



Hunger-relief nonprofits were forced to drastically change operations to keep staff, volunteers, and clients safe while responding to the spike in food insecurity caused by the pandemic. Pictured here, **Manna Food Center** staff expand their distributions to help families struggling to put food on the table.

GRANTEES PROVIDING SAFETY-NET SERVICES TO PEOPLE IN NEED

Montgomery County Food Council (mocofoodcouncil.org) brings together diverse stakeholders to improve the environmental, economic, social and nutritional health of Montgomery County by creating a robust, local, sustainable food system. This year, it developed a food assistance distribution model to mitigate the risk of food supply chain disruptions in Montgomery County. The Food Council also serves as a lead convener and policy expert behind the Food for Montgomery public-private partnership working to strategically address the rising in food insecurity caused by the pandemic.

Nourish Now (nourishnow.org) specializes in food recovery for the benefit of children, families, the elderly, and other organizations working to end hunger. Through its programs, viable food partners are identified, and donations of both prepared meals and shelf-stable food are recovered and redistributed through its network. When COVID-19 struck in March, they developed new programming such as distributing relief boxes, containing meals for a family of four for five days. Nourish Now has provided more than 1.6 million meals to Montgomery County families between March and July 2020.

Shepherd's Table (shepherdstable.org) serves more than 2,400 homeless individuals in the county every year, providing meals, clothing, information and referrals, as well as technical assistance by pro bono lawyers, Veterans Administration staff, barbers and tax preparers who come in to assist clients. It also runs a bi-monthly Eye Clinic to provide vision screenings and prescription eyeglasses for the uninsured, in addition to providing vouchers for prescriptions, mail service, transportation assistance, and telephone access.

St. Camillus Food Pantry (stcamillusfoodpantry.org) distributes nutritious food to ensure that low-income families get enough to eat. Through emergency food distribution on Friday afternoons and Saturday mornings, this all-volunteer, bilingual food pantry distributed more than 10,000 emergency food packages last year alone.

Up-County Consolidation Hub at the BlackRock Center for the Arts (blackrockcenter.org/upcounty-consolidation-hub) collects and distributes donated food and essential goods for communities in Upper Montgomery County. As the host and lead coordinator, BlackRock partners with several organizations to create greater access to food, emergency resources, and long-term supports to help children, families and seniors struggling because of the COVID-19 pandemic.

Medical Care

CCI Health and Wellness (cciweb.org) connects low income, minority, and immigrant patients with holistic health care services delivered by a multilingual and diverse staff that reflects the community it serves. CCI also provides reproductive healthcare, integrated health services, and education targeted especially for teens and young adults.



INNOVATION SPOTLIGHT

Food for Montgomery

Food for Montgomery is a coordinated public-private partnership responding to the alarming increase in food insecurity caused by the pandemic. It brings together the Montgomery County Government, Montgomery County Food Council, The Community Foundation, and community representatives to strategically coordinate efforts so that we can meet the urgent need for food, support our small businesses and farmers, and strengthen the system to address the needs today and into the future.

In just a few short months, the partners behind the Food for Montgomery initiative have:

- Added new food distribution sites throughout the county to improve accessibility
- Provided grants for trucks, refrigerators, freezers, and other equipment to help food distributors serve more people
- Created eight “consolidation hubs” which address hunger and other emergency needs while also connecting residents to solutions to help them work toward stability.
- Purchased fresh produce and made investments to help sustain our local farmers
- Engaged restaurants and caterers to provide prepared meals to ensure seniors could get enough food while they self-quarantine

GRANTEES PROVIDING SAFETY-NET SERVICES TO PEOPLE IN NEED

Pan Asian Volunteer Health Clinic of the Chinese Culture and Community Service Center (en.pavhc-dc.org) provides basic health care and related services for uninsured low-income people in Montgomery County, helping them overcome language barriers to get the care they need. This year, the clinic transitioned to telehealth in order to continue providing health care, education, and related services.

Cornerstone Montgomery, Inc. (www.cornerstonemontgomery.org) works to empower people living with mental health and co-occurring mental health and substance use disorders to live, work and integrate successfully within the community. This year, it had to expand telehealth services in order to continue meeting the needs of more than 2,200 clients.

Mary's Center for Maternal and Child Care (maryscenter.org) is a Federally Qualified Health Center that provides access to wellness care, medical screenings, and referrals for uninsured, under-insured and the working poor across the region. Recently, Mary's Center moved its Montgomery County center to a larger location that allowed for double the volume of medical care, increased behavioral health and social service access, and allowed for dental services to be provided for the first time to county residents. In response to COVID-19, Mary's Center expanded its telehealth programming and has provided over 56,000 telehealth visits from April through July.

Mercy Health Clinic (mercyhealthclinic.org) is a community-based health clinic that provides free medical care, health education, and medication to uninsured, low-income adult residents of the county. The clinic's medical services are delivered primarily by volunteer physicians and other health professionals, and include primary health care and specialty clinics, behavioral health, health education programs and an on-site pharmacy. In response to COVID-19, Mercy Health Clinic implemented tele-medicine programming that has served 859 patients and provided 1,750 healthcare visits from April through July.

Mobile Medical Care Inc. (mobilemedicalcare.org) provides primary and preventive care for over 4,000 low-income, uninsured and underinsured residents of Montgomery County. MobileMed has seven primary care clinics in areas with the greatest need or outreach capacity, including three locations that offer walk-in appointments for patients who have unpredictable work schedules. MobileMed has responded to COVID-19 by implementing telehealth, remote patient monitoring, and curbside services. It also increased health care services for people experiencing homelessness at shelters.

Montgomery Hospice, Inc. (www.montgomeryhospice.org) provides skilled care and physical, emotional, and spiritual support to people living with an advancing life-limiting illness—as well as their caregivers and family members. Throughout the pandemic, Montgomery Hospice team continued to care for infected Hospice at Home patients and to accept terminally ill patients who have tested positive.

Planned Parenthood of Metropolitan Washington ([plannedparenthood.org/ppmw](https://www.plannedparenthood.org/ppmw)) provides high-quality, affordable reproductive health care to women, men and teens in the Washington, D.C. area. Its Community Education and Outreach Department trains peer leaders—mostly low-income, uninsured or under-insured minority teens—in reproductive health and STD/HIV prevention strategies. Last year, its Community Education and Outreach Department helped facilitate educational workshops and organized events that reached more than 9,800 Montgomery County teens and young adults.



All our community's health-focused nonprofits were forced to quickly pivot in order to keep patients safe and stem the spread of COVID-19. Pictured above, staff from **MobileMed** provide care at a mobile clinic to increase accessibility for clients with limited transportation.

Primary Care Coalition (www.primarycarecoalition.org) works with clinics, hospitals, health care providers, and other community partners to advocate for access to affordable, high quality health care and wrap-around services for people who face economic, linguistic, and other barriers to better health. This year's support helped PCC reduce risks for patients and providers and ensure they could continue to provide primary care for low-income residents.

Mental Health Support

EveryMind ([every-mind.org](https://www.every-mind.org)) promotes mental wellness and supports those with mental illness by sponsoring and implementing education, advocacy and direct services. Eight major programs and a variety of services support the mental health-related needs of more than 12,000 county residents of all ages for free or at a significantly reduced rate. It operates a support and crisis intervention helpline and is also the leader behind the Serving Together collaboration which serves nearly 600 veterans and their families annually by coordinating resources and providing education to service members and their families.

NAMI Montgomery County ([namimc.org](https://www.namimc.org)) seeks to help individuals and families affected by mental illness through comprehensive recovery support, education, advocacy, and public awareness building. NAMI also conducts the Sources of Strength program, a student-focused mental health awareness and suicide prevention program, at ten schools, reaching over 13,000 students.

Multiservice Interventions to Help People Move from Crisis to Stability

A Wider Circle (awidercircle.org) helps individuals and families living in poverty by providing basic-need items, employment assistance, and comprehensive support via neighborhood centers in low-income communities. A Wider Circle has also developed a national plan to eradicate poverty, utilizing every sector and replacing the national poverty line with locally based income standards to guide the effort.

Community Reach of Montgomery County (cmrocks.org) provides health and human services to the most vulnerable residents of Montgomery County. Its programs include healthcare for the low-income, uninsured; emergency assistance for families in crisis; permanent supportive housing for formerly homeless men and women; home-care services that enable low-income seniors to age in place; and English as a Second Language, Literacy, and Citizenship classes for immigrants. Their programs serve over 5,000 individuals annually.

Interfaith Works (iworksmc.org) gives comprehensive support to over 17,000 of our neighbors living in poverty, including eviction prevention, emergency shelter for those experiencing homelessness, free clothing, stabilization supports and empowerment programs.

Shelter for People Experiencing Homelessness and Affordable Housing

Bethesda Cares (BethesdaCares.org) helps people suffering chronic homelessness find paths to safe, permanent housing, while also easing their lives through its drop-in center, daily hot meal program, clothing closet and mental health services. Bethesda Cares also works directly with landlords and utility companies to prevent low-income residents from spiraling into homelessness.

Hearts and Homes for Youth (heartsandhomes.org) supports youths who have experienced abuse, neglect, mental health challenges, homelessness and other trauma. In Montgomery County, Hearts and Homes operates four residential programs, a therapeutic foster program and a mother-baby program, serving a total of more than 75 youths each night. The organization strives to build brighter futures for the youths, families and community.

Housing Unlimited Inc. (housingunlimited.org) empowers people in mental health recovery to live on their own and learn the skills they need to be successful and confident. Housing Unlimited provides 192 individuals with affordable homes at 69 fully furnished properties, along with weekly staff visits to check-in with tenants and ensure the homes are well-maintained.

Montgomery County Coalition for the Homeless (mcch.net) works to end homelessness in the county by offering a wide range of permanent and emergency housing options combined with supportive services for 1,600 homeless and formerly homeless children in families and single adults each year. Since 1990, MCCH has played an integral role in the county's response to homelessness, operating 40% of the county's permanent supportive housing solutions and 60% of emergency shelter beds.

Rainbow Place (rainbowplace.org) is an emergency winter shelter for women open from November through March. Each resident is provided with a warm, supportive place to stay, a hot dinner, breakfast, a bag lunch, shower and laundry facilities, clothing, toiletries, storage space and bus tokens. A visiting nurse addresses medical needs weekly. Since the ultimate goal is to help the women transition out of homelessness, case management is offered and strongly encouraged. Rainbow Place serves about 100 guests annually.

Rebuilding Together Montgomery County (rebuildingtogethermc.org) provides home repairs, accessibility modifications, and energy efficiency improvements for vulnerable families so that they may remain living safely and independently in their homes. RTMC serves low-income homeowners across Montgomery County, with particular emphasis on seniors, people with disabilities, veterans, and low-income families with children.

Stepping Stones Shelter (steppingstonesshelter.org) offers a continuum of services to homeless families with children in Montgomery County to help families find longer-term housing solutions and create a stable home environment. They offer services to approximately 88 families with children each year in their shelter.

Legal Services

Ayuda (ayuda.com) provides legal, social and language services to help vulnerable immigrants in our neighborhoods access justice and transform their lives. Ayuda's expert and dedicated professionals help immigrants navigate the immigration and justice systems and access the social safety net. This approach breaks down barriers, helps those in need, and makes our communities stronger. Ayuda serves more than 4,000 clients in the region annually, with more than 500 living in Montgomery County.

Support for Seniors

Home Care Partners (homecarepartners.org) provides nonmedical, support services to low-income elderly, chronically ill and disabled residents throughout the metro region. Each year, licensed aides provide home care services to more than 50 older adults in Montgomery County, giving vulnerable, low-income county



INNOVATION SPOTLIGHT

Neighbors in Need Montgomery Fund

In response to the pandemic, the Neighbors in Need Montgomery Fund supported a coalition of nonprofits working in coordination to avoid duplication as they rushed to help our neighbors hit hardest by the pandemic.

This effort received a special boost when many of our former Montgomery County Philanthropist of the Year honorees and family members stepped up to provide a challenge match. Thanks to them and many others who responded to our Neighbors in DIRE Need Montgomery campaign, hundreds of families have been able to keep a roof over their heads and meet their basic emergency needs.



residents the opportunity to remain in their own homes. Home Care Partners' licensed Training Institute prepares students to become certified home health aides and offers continuing education in caregiving to aides, professionals and family caregivers, and the general public.

Jewish Social Service Agency (jssa.org) is a health and social service agency that helps individuals and families with a wide range of services including counseling, educational, special needs services, in-home support, hospice and nursing care, and social services.

Silver Spring Village (silverspringvillage.org) seeks to build and sustain a supportive network of neighbors helping neighbors remain in their own homes and be engaged in their community as they age in place. Silver Spring Village is a membership organization that targets senior citizens living zip code 20910, providing a combination of direct services and programs including transportation, friendly visits and check-in calls, in-home assistance, medical note taking, health education, and intergenerational social programming.

Trauma Interventions & Recovery Support

Center for Adoption Support and Education (adoptionssupport.org) is the national leader in providing adoption-competent mental health services to address the complex issues faced by foster and adopted children and their families. C.A.S.E. offers a range of programs and resources designed to strengthen the well-being of children and teens.

Tree House Child Advocacy Center of Montgomery County Maryland (treehousemd.org) partners with Montgomery County's Police and Department of Health and Human Services to address child maltreatment—the physical abuse, sexual abuse, mental injury, or neglect of a child by a parent or caregiver. Each year, the Tree House provides over 850 individuals with medical evaluations, mental health assessments and treatment, nurse case management, victim advocacy and forensic interviewing in a safe, child-focused and central location.

Voices for Children Montgomery (casamontgomery.org) supports abused or neglected children by providing them with trained advocates who ensure their best interests are represented in the legal and social service system. Voices also works to ensure that young people aging out of the foster care system are well prepared to support themselves. Through Voices recruitment and training, advocates work with more than 300 children annually.

Academic Skill-Building

CentroNia (centronia.org) provides affordable, quality early childhood education, professional development to educators, and family support services. In a bilingual and multicultural environment, CentroNia serves more than 2,400 low-income children and families. This year, CentroNia added the Waterford Upstart program in Montgomery County to engage four year old children in virtual Pre-K enrichment and learning activities so they would not miss out on gaining key skills necessary for kindergarten.

Dolly Parton's Imagination Library (imaginationlibrarymcmd.org) is an international book gifting program that mails free books to children from birth to age five in participating communities. This program works to foster stronger parent/child connections through a love of books and reading aloud while also helping children build pre-reading and school readiness skills. Since 2015, Imagination Library gifted over 28,000 books to 1,357 children in Montgomery County.

The George B. Thomas Sr. Learning Academy's Saturday School (saturdayschool.org) supports more than 2,700 students and their families in Montgomery County Public Schools. With 12 centers in areas with high poverty, the Saturday School works to ensure that the most academically at-risk students can access grade-appropriate, low-cost academic tutoring and mentoring services. The Saturday School also offers parent workshops in English and Spanish.

Horizons Greater Washington (horizonsgreaterwashington.org) provides academic, cultural, and recreational programs designed to empower students to realize their full potential. Through their year-round summer and Saturday programs, Horizons seeks to prevent learning loss for the 375+ kids it serves. Activities are geared to help kids strengthen problem-solving skills, foster awareness of community responsibility, instill respect for themselves and others and encourage a life-long interest in learning.



When school went virtual in the spring, youth-focused nonprofits had to try creative strategies to connect with kids and support their needs. Pictured above, staff from **Horizons Greater Washington** deliver kits with art and STEM activities for a virtual enrichment summer program.

Jewish Council for the Aging of Greater Washington (accessjca.org) provides intergenerational programs through the JCA Heyman Interages Center, bringing children and older adults together to encourage social connection and support.



INNOVATION SPOTLIGHT

Children's Opportunity Fund

Deeply concerned about our community's children, the Children's Opportunity Fund launched a special campaign to support Learning and Equity Hubs. This effort worked in partnership with childcare providers, local schools and the Black and Brown Coalition for Educational Equity and Excellence to advocate for and provide full-day support for low-income, Black and Latino students who are at risk of disengagement or facing the life-long consequences of an interrupted education.

Thanks to a grassroots fundraising effort, this project is providing a safe place for more than 400 children to complete their remote schooling with guidance and supervision from dedicated staff. Furthermore, the initial private investments have become a catalyst to attract public dollars, allowing the Children's Opportunity Fund and local partners to expand this resource to hundreds more kids.

GRANTEES PROVIDING EDUCATIONAL OPPORTUNITIES

During the 2020-2021 school year, Interages is providing virtual tutoring for elementary students with trained volunteers in reading and math.

KID Museum (kid-museum.org) provides hands-on learning that incorporates Science, Technology, Engineering, and Math (STEM) with 21st century skills like creativity and critical thinking, serving over 10,000 students annually, of whom over half are from high-needs schools. Its Invention Studio enables kids to build skills and knowledge through multi-session, project-based learning experiences using a wide variety of low- and high-tech tools to create inventions of their own design.

Latino Student Fund (latinostudentfund.org) provides opportunities to build a strong academic foundation for underserved PreK-12th grade students in DC, Prince George's County and most recently, Montgomery County. By providing year-round, out-of-school-time programs for 90 low-income, at-risk students and their families, Latino Student Fund increases levels of educational attainment in the community.

Montgomery Housing Partnership (mhppartners.org) is the largest nonprofit developer of affordable rental housing in the county, serving more than 2,100 families in Wheaton, Takoma Park, Silver Spring and other transit-oriented communities. MHP seeks to house people, empower families, and strengthen neighborhoods by acquiring, rehabilitating, building and managing quality affordable housing for low- and moderate-income families and providing community life programs for its residents. MHP provides Play & Learn programs and after-school Homework Clubs to 300+ children living at its affordable housing properties to help ensure their long-term success in school.

Enrichment & Leadership Development

Artivate (goartivate.org) engages communities to create interactive arts experiences that inspire learning. Artivate provides a variety of programs that bring culturally diverse performances, workshops, and artist residencies to schools, at-risk youth, seniors, and special needs populations. Its Project Youth ArtReach program brings the arts into area detention and correctional facilities, providing classes and mentorships to 400+ court-involved and incarcerated youth in Montgomery County.

Arts on the Block (artsontheblock.com) empowers youth to be creative, contribute to their community, and design the future through real-world arts and entrepreneurial training. Through the apprentice program, youth work with established artists and mentors on commissioned artwork with the goal of fostering enduring change in themselves and their communities. This year, Arts on the Block launched its Youth Arts Movement program to provide elementary students a virtual, dual-language STEAM experience which combined literacy and arts exploration with social-emotional supports.

Asian American LEAD (aalead.org) equips low-income and underserved Asian Pacific American youth with the tools and opportunities to define themselves and their own futures. AALEAD currently supports more than 160 youth with educational empowerment, identity development, and leadership opportunities through afterschool, summer, and mentoring programs.

BlackRock Center for the Arts (blackrockcenter.org) is a performing and visual arts center. Due to COVID-19 pandemic, BlackRock fulfilled its mission of providing access to the arts virtually and in person while also launching a consolidation hub to meet the needs of Upper Montgomery County families hit hardest by the pandemic. BlackRock also expanded its support of low-income elementary school students through a virtual program which combined arts education and literacy.

Community Bridges, Inc. (www.communitybridges-md.org) empowers girls in elementary, middle and high school from diverse backgrounds to become exceptional students, positive leaders, and healthy young women. More than 300 girls in grades 3-12 discover their unique identity and potential through a holistic program of leadership development, college and career readiness, academic support and enrichment.

Crittenton Services of Greater Washington (crittentonservices.org) helps teen girls make positive choices and believe in their ability to succeed — even in the face of significant challenges. Its school-based programs work with 400 middle and high school girls, teaching them about healthy relationships, reproductive health, college and careers, and equipping them with the life skills they need to succeed.

Gandhi Brigade (gandhibrigade.org) trains youth to produce documentaries, public service announcements, and graphic design campaigns which equip them with leadership and communications skills while increasing civic engagement around issues affecting their communities.

Girls on the Run of Montgomery County (girlsontherunofmoco.org) provides an interactive after-school running program to over 5,000 girls throughout Montgomery County. Its fun, experience-based curriculum creatively integrates running into a program that seeks to inspire girls to be healthy and confident. The program culminates with the girls completing a 5K running event that builds confidence through accomplishment.



GRANTEES PROVIDING EDUCATIONAL OPPORTUNITIES

Identity, Inc. (identity-youth.org) provides educational opportunities, social service supports and positive role models to about 3,500 youth annually to facilitate their successful transition to post-secondary education and the workforce. Identity serves Latino youth and their families with culturally competent school-based and summer programs, gang prevention and intervention, youth leadership, health promotion, mental health services, job readiness workshops, GED instruction, rehabilitation services for youth offenders and other family-based initiatives.



Many youth-focused nonprofits retooled themselves to help ensure kids and their families could keep a roof over their heads, put food on the table, and fully participate in virtual learning. Pictured here, **Identity, Inc.** staff prepare care packages and learning kits.

Latin American Youth Center (layc-dc.org) reaches at-risk youths in the region, particularly those who have dropped out of school. Its programs include job readiness training, paid internships, work experience, GED instruction, academic enrichment, college preparation, case management, counseling, mentoring, leadership development and life skills critical for adulthood.

Liberty's Promise (libertyspromise.org) engages low-income, immigrant youth in civic life through an after-school program that includes community engagement, career and college readiness, and a professional internship component that places teens in government agencies, small businesses, or nonprofit organizations. Liberty's Promise serves at least 360 Montgomery County youth annually.

Making a New United People (MANUP) (manupnow.org) supports young leaders to become resilient, healthy, and contributing community members by providing mentoring support and learning opportunities focused on building critical thinking, emotional intelligence, employability, and entrepreneurial skills.

MentorPrize (mentorprize.org) recruits mentors on behalf of youth-serving programs, serving as a pipeline to more efficiently connect caring adults to youth in need of positive, supportive role-models, thereby expanding the capacity of its partner nonprofits.

Passion for Learning Inc. (passionforlearning.org) helps low-income middle school students develop the skills they need for a 21st Century knowledge-based economy and technology-rich global society. Through after-school and summer literacy-based digital learning, the youth inquire, create, collaborate, problem solve, communicate and connect with the world. They become savvy and responsible

digital content creators and critical thinkers. After-school and summer programs incorporate academic enrichment, information technology exploration and college/career connections.

Project Change (projectchange-md.org) provides a free summer camp which engages youth in producing original musical theatre while developing skills to support their social-emotional health, such as improving self-esteem, conflict resolution skills, and anti-bullying awareness.

YMCA's Youth and Family Services (yfs.ymcadc.org) provides out-of-school education, mentoring, counseling, and wrap-around case management programs to help children and their families who are struggling to overcome poverty and/or trauma.

Accessing & Navigating Higher Education

Achieving Collegiate Excellence and Success (ACES) program of Montgomery College (montgomerycollege.edu/aces) is a collaboration among Montgomery County Public Schools, Montgomery College, and the Universities at Shady Grove that aims to increase college enrollment and completion in Montgomery County for students traditionally underrepresented in higher education. The program provides targeted academic coaching, interventions, and support to approximately 2,400 students while enrolled.

CEO Program of the Universities at Shady Grove (shadygrove.umd.edu/student-services/center-for-recruitment-and-transfer-access/career-experience-opportunities) offers a five-year CEO Program for MCPS students in the ACES program. The CEO Program provides students with the knowledge, skills and experience to be career-ready when they graduate college by combining classroom studies and work skills development with career experiences such as job shadowing and internships related to a student's field of study.

CollegeTracks (collegetracks.org) works with Montgomery County Public Schools students to navigate the college application and financial aid process and to enroll, persist, and graduate from college or technical school. The 1,000 students served annually are often low-income and/or the first in their families to apply to college.



Aspiring college students are face numerous barriers to get into and persist in college. Knowing support is more vital than ever, college-access nonprofits found new ways to connect with and support students. Pictured here, a **CollegeTracks** participant celebrates his graduation.

Future Link Inc. (futurelinkmd.org) empowers over 300 disadvantaged young adults annually through career exploration programs, workforce development, academic advising, scholarships, paid internships, and mentors. Its intensive, individualized program emphasizes entrance into and persistence in post-secondary education; teaches youth good workplace, self-advocacy, and personal decision-making skills; and helps youth identify and carve out a plan for a meaningful and realistic career pathway that will enable them to become self-sufficient.



With an economy made weak by the pandemic, skill-building and job coaching resources are vitally important to help people get back to work. Pictured here, the **CareerCatchers** team takes their personalized workshops online help clients set and pursue their goals.

Generation Hope (supportgenerationhope.org) seeks to reduce poverty one family at a time by providing tuition assistance, one-on-one mentoring, and crisis support to empower teen mothers and fathers complete their college degree. To date, over 100 scholars have enrolled in the program.

Building Skills & Networks

Family Services Inc. of Sheppard Pratt (fs-inc.org) improves the quality of life for more than 17,000 low-income children, individuals and families each year by compassionately providing prevention and early-intervention services, emergency assistance, mental health and substance abuse services, early childhood programs, domestic violence services and community outreach. The Keys to Success program provides career mentoring and life skills development for parenting teens so that they complete high school and gain skills necessary to support their children's development. The Family Discovery Center is a multi-generational program that promotes adult learning and healthy child development in families with young children. The Thriving Germantown collaboration provides care-coordination so young children and their families can access the health, educational, and skill-building resources needed to move the whole family to stability. Their Healthy Mothers, Healthy Babies program provides in-home mental health counseling for low-income, uninsured mothers with perinatal depression.

CareerCatchers (careercatchers.org) provides one-on-one career counseling and job-skills training and workshops for over 500 unemployed and underemployed adults in the county annually. Its customized approach helps low-income, domestic violence victims, recent immigrants, and homeless clients obtain employment that pays a living wage, fosters self-esteem, enhances personal growth and builds social and work skills leading to self-sufficiency.

IMPACT Silver Spring (impactsilverspring.org) works to build a racially and economically equitable Montgomery County. Its programming is geared to engage neighbors across lines of difference so they can spark change on multiple levels: transformation at the individual and interpersonal level through various learning series and events which aim to change hearts and minds; neighborhood transformation through Opportunity Circles and network-building events to change relationship dynamics and practices; and systems transformation through advocacy and organizing to change power dynamics and paradigms around the goal of building racial equity.

Per Scholas (perscholas.org/nationalcapitalregion) opens doors to technology careers for individuals from often overlooked communities. Through its full-time, tuition-free technology job training courses, Per Scholas equips 240 individuals annually with industry-recognized certifications and connects them to in-demand tech jobs in the National Capital Region. In addition to technical training, the organization provides a variety of career development and support services throughout training and for two or more years after graduation to help students secure jobs and thrive and grow in tech careers.

Urban Alliance (theurbanalliance.org) prepares underserved high school seniors for future economic self-sufficiency through an intensive, year-long experience combining paid, professional internships, job skills training, one-on-one mentoring, and ongoing post-program support. A six-year randomized controlled trial found that completing the internship program had a statistically significant impact on young men attending college and mid-GPA students enrolling in four-year colleges. With sites in multiple cities, the Montgomery County partnership serves a cohort of 30 high school seniors plus program graduates each year.

Launching & Growing Small Businesses

Latino Economic Development Corporation (ledcmetro.org) equips Latinos and other D.C.-area residents with the skills and tools necessary to achieve financial independence and become leaders in their communities. Its Small Business Services include technical assistance and micro-loans for aspiring and existing low-to moderate-income entrepreneurs. Its housing services help aspiring homeowners appropriately prepare for homeownership and prevent families from going into foreclosure.

Literacy & English Skills

Literacy Council of Montgomery County (literacycouncilmcmd.org) is an adult education and human services organization that provides basic literacy and English as a Second Language (ESL) tutoring, ESL classes, pre-GED preparation for adults, conversation classes for English learners, workforce development and

job-skills training, and more. Annually, it serves more than 2,000 adult learners and relies heavily on a robust volunteer corps to provide individualized mentorship for adults struggling with literacy to improve their employment prospects, educational opportunities and everyday lives.

Montgomery Coalition for Adult English Literacy (mcael.org) facilitates Montgomery County's grantmaking focused on teaching literacy and English language skills, provides county-wide coordination among providers, fosters collaboration, and builds capacity so that providers can help clients advance. Funding will support MCAEL's pilot to provide English classes at workplaces so employees can gain the skills needed to advance in their jobs as well as take care of their families.

Training & Jobs for Adults with Special Needs

The Arc of Montgomery County (www.thearcmontgomerycounty.org) supports children, youth, adults, seniors and families affected by disabilities by providing childcare, work skills training, employment, community living services, resources, respite care and advocacy. This year, it provided virtual supports to 577 people with intellectual and development disabilities.

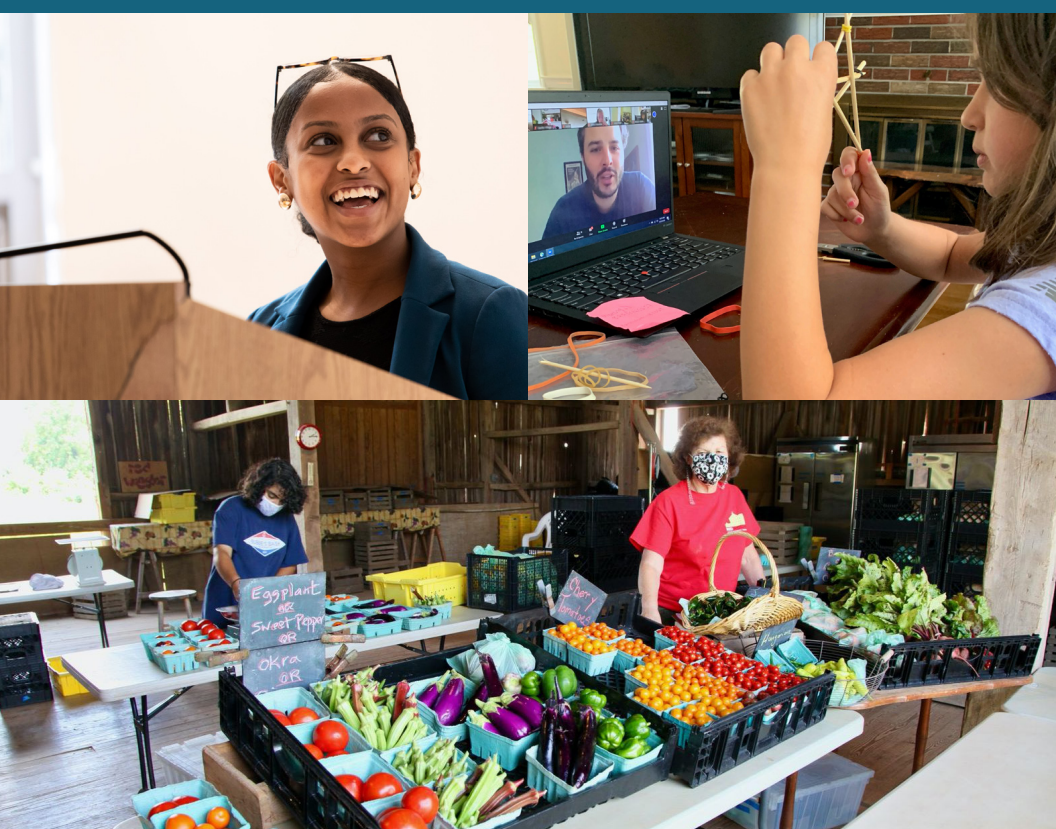
Red Wiggler Community Farm (redwiggler.org) provides employment for adults with developmental disabilities as "growers" on its Certified Organic farm. Annually, more than 1,200 people, with and without developmental disabilities, participate in inclusive education and service-learning activities in the outdoor classroom. Growers and volunteers harvest more than 34,000 pounds of organic produce a year, 30% of which is distributed to low-income individuals in Montgomery County.

Seeking Employment, Equality and Community (www.seeonline.org) provides community-based, person-directed services to help people with intellectual and developmental disabilities direct their lives towards work, relationships, recreation, and personal development. Despite the pandemic, SEEC continued programs providing employment, community engagement, and assistance for basic needs.

Sunflower Bakery (sunflowerbakery.org) prepares young adults with learning differences for employment through skilled, on-the-job training. Its individualized program includes 26 weeks of on-site professional instruction, skills training, a paid off-site internship for 18-22 individuals annually, and a summer job exposure program for teens. Café Sunflower offers three months of formal instructions to eight young adults and, if successful, the opportunity to continue for six months of paid employment and training. The cafe also offers eight-week internships where high school students work in an integrated environment gaining experience in customer service, business operations, marketing, and sales.

Nonprofit Montgomery (nonprofitmoco.org) works to strengthen the nonprofit sector through leadership development, organizational capacity building, government relations, advocacy, strategic communications, and cross-sector problem solving. Through its Financial Reporting and Management (FIRM) Institute, nonprofit leaders gain vital knowledge and tools to achieve financial sustainability and strengthen staff-board partnerships. Additionally, an intensive training on metrics, outcomes and responsible evaluation (MORE) equips nonprofits on strategic approaches to measure their work so that they can adapt and make a deeper impact. This year, Nonprofit Montgomery's leadership was pivotal to ensuring our nonprofits could get the information needed to safely provide vital services and help stem the spread of COVID-19.

Nonprofit Village (thenonprofitvillage.org) offers a shared space, essential services, and collaborative opportunities geared to help nonprofits save time and money. Nonprofit members take advantage of educational and business development programs, office services, and resource referrals. This year, the Nonprofit Village also provided support to nonprofits transitioning to telework, including training and upgraded technology.





WWW.THECOMMUNITYFOUNDATION.ORG